



## Spring Clips

Material: Spring Steel - ASTM-A684

Standard Plating: Cadmium-Yellow Chromate AMS QQ-P-416 CLASS 2 TYPE II

Other Finishes Available: [www.atlee.com/wp-content/uploads/docs/finishes.pdf](http://www.atlee.com/wp-content/uploads/docs/finishes.pdf)

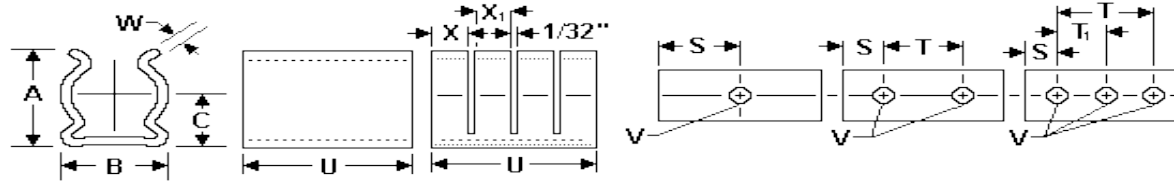


Figure 1. Figure 2.

### .400 Diameter Spring Clips – Spring Steel

Part #	Nom Dia	Min Dia	Max Dia	Holes	U +/- .010	A +/- .020	B +/- .010	C +/- .020	W +/- .003	V +/- .003	S +/- .010	X +/- .020	X +/- .020	T +/- .005	T1 +/- .005	Slots	Figure
100-200-07-000	0.4	0.37	0.42	2	0.75	0.5	0.43	0.28	0.018	0.103	0.188			0.375		0	1
100-200-07-001	0.4	0.37	0.42	2	0.75	0.5	0.43	0.28	0.018	0.093	0.188			0.375		0	1
100-200-07-002	0.4	0.37	0.42	1	0.5	0.5	0.43	0.28	0.02	0.103	0.25					0	1
100-200-07-003	0.4	0.37	0.42	2	0.75	0.5	0.43	0.28	0.018	0.103	0.188	0.36		0.375		1	2
100-200-07-005	0.4	0.37	0.42	2	0.75	0.5	0.43	0.28	0.018	0.098	0.188			0.375		0	1
100-200-07-006	0.4	0.37	0.42	2	0.563	0.5	0.43	0.28	0.018	0.099	0.094			0.375		0	1
100-200-07-007	0.4	0.37	0.42	2	0.75	0.49	0.42	0.27	0.012	0.099	0.172	0.36		0.406		1	2
100-200-07-008	0.4	0.37	0.42	2	0.75	0.49	0.42	0.27	0.012	0.103	0.188			0.375		0	1
100-200-07-009	0.4	0.37	0.42	2	0.75	0.5	0.43	0.28	0.018	0.103	0.156			0.437		0	1
100-200-07-010	0.4	0.37	0.42	2	0.75	0.5	0.43	0.28	0.018	0.136	0.188	0.22	0.22	0.375		2	2
100-200-07-011	0.4	0.37	0.42	2	0.75	0.49	0.42	0.27	0.012	0.103	0.188	0.36		0.375		1	2
100-200-07-012	0.4	0.37	0.42	2	0.75	0.49	0.42	0.27	0.012	0.099	0.172			0.406		0	1
100-200-07-013	0.4	0.37	0.42	2	0.75	0.49	0.43	0.28	0.016	0.093	0.175	0.22	0.22	0.4		2	2
100-200-07-014	0.4	0.37	0.42	1	0.5	0.5	0.43	0.28	0.02	0.093	0.25					0	1
100-200-07-015	0.4	0.37	0.42	1	0.5	0.5	0.43	0.28	0.02	0.136	0.25					0	1
100-200-07-016	0.4	0.37	0.42	1	0.5	0.49	0.42	0.27	0.012	0.136	0.25					0	1
100-200-07-017	0.4	0.37	0.42	2	0.625	0.5	0.43	0.28	0.018	0.093	0.156			0.312		0	1
100-200-07-018	0.4	0.37	0.42	1	0.5	0.49	0.42	0.27	0.012	0.103	0.25					0	1
100-200-07-019	0.4	0.37	0.42	2	0.75	0.49	0.42	0.27	0.012	0.103	0.2	0.36		0.35		1	2
100-200-07-020	0.4	0.37	0.42	2	0.781	0.49	0.42	0.27	0.012	0.103	0.191	0.37		0.4		1	2
100-200-07-021	0.4	0.37	0.42	2	0.75	0.49	0.42	0.27	0.012	0.093	0.156			0.437		0	1
100-200-07-022	0.4	0.37	0.42	1	0.75	0.5	0.43	0.28	0.018	0.136	0.188			0.375		0	1
100-200-07-023	0.4	0.37	0.42	2	0.75	0.5	0.43	0.28	0.018	0.103	0.125			0.5		0	1
100-200-07-024	0.4	0.37	0.42	2	0.5	0.5	0.43	0.28	0.014	0.065	0.125	0.14	0.14	0.25		2	2
100-200-07-025	0.4	0.37	0.42	1	0.375	0.5	0.43	0.28	0.012	0.128	0.188					0	1

**Note:** All dimensions are with clip secured to flat surface as normally mounted with component of nominal diameter in place.



## Spring Clips

Material: Spring Steel - ASTM-A684

Standard Plating: Cadmium-Yellow Chromate AMS QQ-P-416 CLASS 2 TYPE II

Other Finishes Available: [www.atlee.com/wp-content/uploads/docs/finishes.pdf](http://www.atlee.com/wp-content/uploads/docs/finishes.pdf)

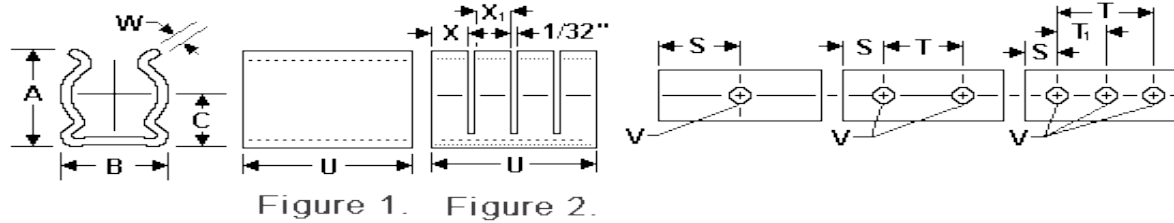


Figure 1. Figure 2.

Part #	Nom Dia	Min Dia	Max Dia	Holes	U +/- .010	A +/- .020	B +/- .010	C +/- .020	W +/- .003	V +/- .003	S +/- .010	X +/- .020	X +/- .020	T +/- .005	T1 +/- .005	Slots	Figure
100-200-07-091	0.4	0.37	0.42	2	0.75	0.49	0.42	0.27	0.012	0.093	0.188			0.375		0	1
100-200-07-092	0.4	0.37	0.42	1	0.375	0.5	0.43	0.28	0.01	0.128	0.188					0	1
100-200-07-093	0.4	0.37	0.42	2	0.5	0.49	0.42	0.27	0.012	0.093	0.156			0.187		0	1
100-200-07-094	0.4	0.37	0.42	2	0.6	0.49	0.43	0.28	0.016	0.103	0.15			0.3		0	1
100-200-07-095	0.4	0.37	0.42	2	1.2	0.49	0.43	0.28	0.016	0.103	0.3			0.6		0	1
100-200-07-096	0.4	0.37	0.42	2	0.8	0.49	0.43	0.28	0.016	0.103	0.2			0.4		0	1
100-200-07-097	0.4	0.37	0.42	1	0.375	0.5	0.43	0.28	0.01	0.093	0.188					0	1
100-200-07-098	0.4	0.37	0.42	3	1.188	0.49	0.42	0.27	0.012	0.093	0.187	0.38	0.38	0.813	0.406	2	2
100-200-07-099	0.4	0.37	0.42	3	1	0.49	0.42	0.27	0.012	0.093	0.093	0.28	0.38	0.813	0.406	2	2

**Note:** All dimensions are with clip secured to flat surface as normally mounted with component of nominal diameter in place.