



## Spring Clips

Material: Spring Steel - ASTM-A684

Standard Plating: Cadmium-Yellow Chromate AMS QQ-P-416 CLASS 2 TYPE II

Other Finishes Available: [www.atlee.com/wp-content/uploads/docs/finishes.pdf](http://www.atlee.com/wp-content/uploads/docs/finishes.pdf)

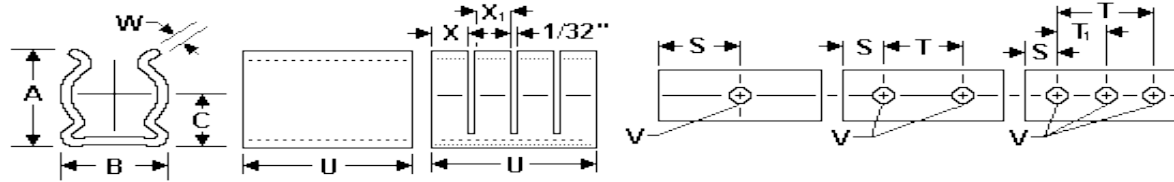


Figure 1. Figure 2.

### .400 Diameter Spring Clips – Spring Steel

Part #	Nom Dia	Min Dia	Max Dia	Holes	U +/- .010	A +/- .020	B +/- .010	C +/- .020	W +/- .003	V +/- .003	S +/- .010	X +/- .020	X +/- .020	T +/- .005	T1 +/- .005	Slots	Figure
100-200-08-000	0.4	0.37	0.42	3	1.125	0.5	0.43	0.28	0.02	0.103	0.188			0.75	0.375	0	1
100-200-08-001	0.4	0.37	0.42	3	1.125	0.5	0.43	0.28	0.02	0.093	0.188			0.75	0.375	0	1
100-200-08-002	0.4	0.37	0.42	3	1.125	0.5	0.43	0.28	0.02	0.103	0.156			0.813	0.406	0	1
100-200-08-003	0.4	0.37	0.42	3	1.125	0.49	0.42	0.27	0.012	0.093	0.188			0.75	0.375	0	1
100-200-08-004	0.4	0.37	0.42	3	1.125	0.49	0.43	0.28	0.016	0.103	0.188			0.75	0.375	0	1
100-200-08-005	0.4	0.37	0.42	3	1.125	0.49	0.43	0.28	0.016	0.103	0.188	0.34	0.38	0.75	0.375	2	2
100-200-08-006	0.4	0.37	0.42	3	1.125	0.5	0.43	0.28	0.02	0.103	0.188	0.34	0.38	0.75	0.375	2	2
100-200-08-007	0.4	0.37	0.42	3	1.125	0.5	0.43	0.28	0.02	0.093	0.188	0.34	0.38	0.75	0.375	2	2
100-200-08-008	0.4	0.37	0.42	3	1.125	0.49	0.43	0.28	0.016	0.093	0.163	0.34	0.38	0.8	0.4	2	2
100-200-08-009	0.4	0.37	0.42	3	2	0.49	0.43	0.28	0.016	0.093	0.3	0.26	0.26	1.4	0.7	6	2
100-200-08-010	0.4	0.37	0.42	3	1.375	0.49	0.42	0.27	0.012	0.103	0.188			1	0.5	0	1
100-200-08-011	0.4	0.37	0.42	3	1.5	0.49	0.42	0.27	0.012	0.103	0.25			1	0.5	0	1
100-200-08-012	0.4	0.37	0.42	3	1.125	0.49	0.42	0.27	0.012	0.103	0.188			0.75	0.375	0	1
100-200-08-013	0.4	0.37	0.42	3	2	0.49	0.42	0.27	0.012	0.093	0.3			1.4	0.7	0	1
100-200-08-014	0.4	0.37	0.42	2	1.125	0.5	0.43	0.28	0.018	0.098	0.188			0.75		0	1
100-200-08-015	0.4	0.37	0.42	3	1.875	0.49	0.42	0.27	0.012	0.103	0.188			1.5	0.75	0	1
100-200-08-016	0.4	0.37	0.42	3	1.125	0.49	0.42	0.27	0.012	0.103	0.188	0.34	0.38	0.75	0.375	2	2
100-200-08-017	0.4	0.37	0.42	2	1.125	0.5	0.43	0.28	0.014	0.103	0.188	0.35	0.36	0.75		2	2
100-200-08-018	0.4	0.37	0.42	2	1.375	0.49	0.42	0.27	0.012	0.103	0.188	0.44	0.44	1		3	2
100-200-08-094	0.4	0.37	0.42	2	1	0.5	0.43	0.28	0.02	0.14	0.2			0.6		0	1
100-200-08-095	0.4	0.37	0.42	3	2	0.49	0.42	0.27	0.012	0.093	0.3	0.646	0.646	0.7	1.4	2	2
100-200-08-096	0.4	0.37	0.42	3	1.5	0.49	0.43	0.28	0.016	0.128	0.187			1.125	0.562	0	1
100-200-08-097	0.4	0.37	0.42	3	1.125	0.49	0.43	0.28	0.016	0.103	0.156			0.813	0.406	0	1
100-200-08-098	0.4	0.37	0.42	3	1.125	0.49	0.43	0.28	0.016	0.128	0.188			0.75	0.375	0	1
100-200-08-099	0.4	0.37	0.42	3	1.187	0.49	0.42	0.27	0.012	0.103	0.187	0.375	0.375	0.812	0.406	2	2

**Note:** All dimensions are with clip secured to flat surface as normally mounted with component of nominal diameter in place.

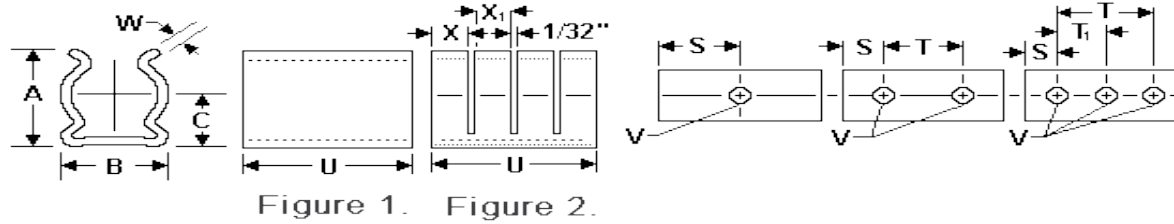


## Spring Clips

Material: Spring Steel - ASTM-A684

Standard Plating: Cadmium-Yellow Chromate AMS QQ-P-416 CLASS 2 TYPE II

Other Finishes Available: [www.atlee.com/wp-content/uploads/docs/finishes.pdf](http://www.atlee.com/wp-content/uploads/docs/finishes.pdf)



**Note:** All dimensions are with clip secured to flat surface as normally mounted with component of nominal diameter in place.