



Spring Clips

Material: Spring Steel - ASTM-A684

Standard Plating: Cadmium-Yellow Chromate AMS QQ-P-416 CLASS 2 TYPE II

Other Finishes Available: www.atlee.com/wp-content/uploads/docs/finishes.pdf

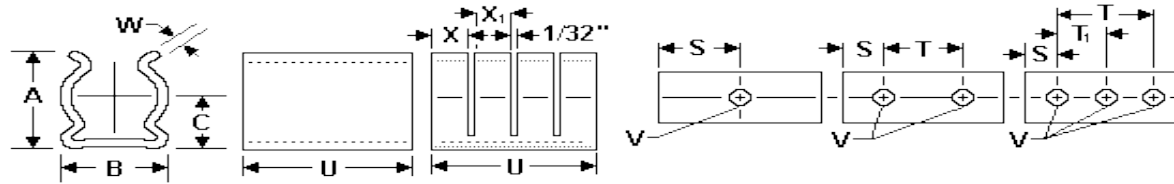


Figure 1. Figure 2.

.562 Diameter Spring Clips – Spring Steel

Part #	Nom Dia	Min Dia	Max Dia	Holes	U +/- .010	A +/- .020	B +/- .010	C +/- .020	W +/- .003	V +/- .003	S +/- .010	X +/- .020	X +/- .020	T +/- .005	T1 +/- .005	Slots	Figure
100-200-10-000	0.562	0.522	0.592	3	1.625	0.69	0.6	0.4	0.022	0.128	0.25			1.125	0.562	0	1
100-200-10-001	0.562	0.522	0.592	2	1.125	0.69	0.6	0.4	0.022	0.093	0.156			0.813		0	1
100-200-10-002	0.562	0.522	0.592	1	0.5	0.69	0.6	0.4	0.022	0.128	0.25					0	1
100-200-10-003	0.562	0.522	0.592	3	1.625	0.68	0.59	0.39	0.016	0.128	0.25			1.125	0.562	0	1
100-200-10-004	0.562	0.522	0.592	1	0.5	0.68	0.59	0.39	0.016	0.128	0.25					0	1
100-200-10-005	0.562	0.522	0.592	2	1.063	0.68	0.59	0.39	0.016	0.128	0.25			0.562		0	1
100-200-10-007	0.562	0.522	0.592	3	1.375	0.68	0.59	0.39	0.016	0.128	0.125			1.125	0.562	0	1
100-200-10-008	0.562	0.522	0.592	2	0.563	0.69	0.6	0.4	0.022	0.128	0.125			0.312		0	1
100-200-10-009	0.562	0.522	0.592	2	1.063	0.68	0.59	0.39	0.016	0.128	0.25	0.33	0.33	0.562		2	2
100-200-10-010	0.562	0.522	0.592	3	1.625	0.69	0.6	0.4	0.022	0.093	0.406			0.813	0.406	0	1
100-200-10-011	0.562	0.522	0.592	2	1.063	0.69	0.6	0.4	0.022	0.128	0.375			0.312		0	1
100-200-10-012	0.562	0.522	0.592	2	1.063	0.68	0.59	0.39	0.016	0.128	0.25			0.562		0	1
100-200-10-013	0.562	0.522	0.592	2	1.063	0.68	0.59	0.39	0.016	0.128	0.25	0.52		0.562		1	2
100-200-10-014	0.562	0.522	0.592	3	1.625	0.68	0.59	0.39	0.016	0.128	0.25	0.52	0.52	1.125	0.562	2	2
100-200-10-015	0.562	0.522	0.592	3	1.5	0.68	0.59	0.39	0.016	0.128	0.25	0.22	0.22	1	0.5	2	2
100-200-10-016	0.562	0.522	0.592	3	1.625	0.69	0.6	0.4	0.022	0.103	0.25			1.125	0.562	0	1
100-200-10-018	0.562	0.522	0.592	3	1.625	0.68	0.58	0.39	0.012	0.103	0.25	0.52	0.52	1.125	0.562	2	2
100-200-10-019	0.562	0.522	0.592	3	1.5	0.68	0.58	0.39	0.014	0.128	0.25			1	0.5	0	1
100-200-10-020	0.562	0.522	0.592	1	0.188	0.69	0.6	0.4	0.02	0.068	0.093					0	1
100-200-10-021	0.562	0.522	0.592	2	1.625	0.68	0.58	0.39	0.012	0.103	0.212	0.79		1.2		1	2
100-200-10-022	0.562	0.522	0.592	2	0.875	0.68	0.58	0.39	0.014	0.128	0.281	0.265	0.265	0.312		2	2
100-200-10-093	0.562	0.522	0.592	2	1.125	0.69	0.6	0.4	0.022	0.149	0.125			0.875		0	1
100-200-10-094	0.562	0.522	0.592	3	1.625	0.68	0.59	0.39	0.016	0.128	0.25	0.12	0.12	1.125	0.562	10	2
100-200-10-095	0.562	0.522	0.592	2	1.25	0.69	0.6	0.4	0.022	0.099	0.275	0.39	0.39	0.7		2	2
100-200-10-096	0.562	0.522	0.592	1	1.625	0.68	0.59	0.39	0.016	0.128	0.812					0	1

Note: All dimensions are with clip secured to flat surface as normally mounted with component of nominal diameter in place.

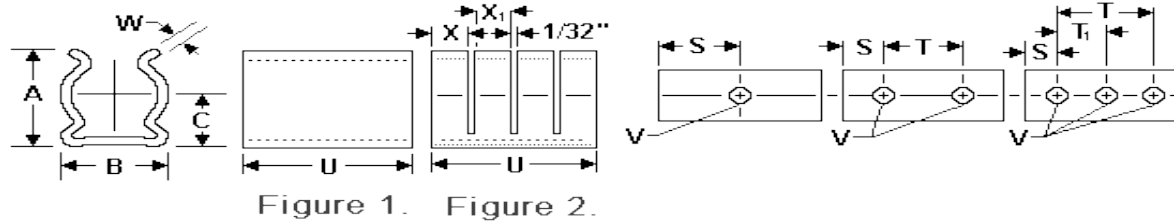


Spring Clips

Material: Spring Steel - ASTM-A684

Standard Plating: Cadmium-Yellow Chromate AMS QQ-P-416 CLASS 2 TYPE II

Other Finishes Available: www.atlee.com/wp-content/uploads/docs/finishes.pdf



Part #	Nom Dia	Min Dia	Max Dia	Holes	U +/- .010	A +/- .020	B +/- .010	C +/- .020	W +/- .003	V +/- .003	S +/- .010	X +/- .020	X +/- .020	T +/- .005	T1 +/- .005	Slots	Figure
100-200-10-097	0.562	0.522	0.592	3	1.5	0.68	0.59	0.39	0.016	0.128	0.25	0.48	0.48	1	0.5	2	2
100-200-10-098	0.562	0.522	0.592	3	1.625	0.68	0.58	0.39	0.012	0.128	0.25	0.78		1.125	0.562	1	2
100-200-10-099	0.562	0.522	0.592	2	1	0.68	0.58	0.39	0.014	0.128	0.25	0.48		0.5		1	2

Note: All dimensions are with clip secured to flat surface as normally mounted with component of nominal diameter in place.