



Spring Clips

Material: Spring Steel - ASTM-A684

Standard Plating: Cadmium-Yellow Chromate AMS QQ-P-416 CLASS 2 TYPE II

Other Finishes Available: www.atlee.com/wp-content/uploads/docs/finishes.pdf

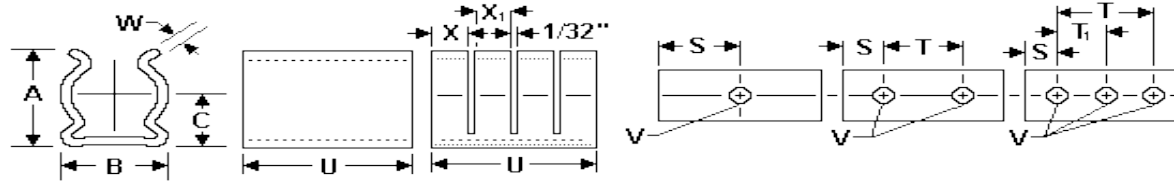


Figure 1. Figure 2.

1.000 Diameter Spring Clips – Spring Steel

Part #	Nom Dia	Min Dia	Max Dia	Holes	U +/- .010	A +/- .020	B +/- .010	C +/- .020	W +/- .003	V +/- .003	S +/- .010	X +/- .020	X +/- .020	T +/- .005	T1 +/- .005	Slots	Figure
100-200-13-000	1.000	0.940	1.020	3	1.875	1.220	1.060	0.670	0.032	0.144	0.250			1.375	0.688	0	1
100-200-13-001	1.000	0.940	1.020	3	1.875	1.220	1.060	0.670	0.032	0.128	0.250			1.375	0.688	0	1
100-200-13-002	1.000	0.940	1.020	2	1.188	1.220	1.060	0.670	0.032	0.144	0.250			0.688		0	1
100-200-13-003	1.000	0.940	1.020	3	1.469	1.210	1.050	0.660	0.024	0.144	0.266			0.937	0.468	0	1
100-200-13-004	1.000	0.940	1.020	2	1.000	1.210	1.050	0.660	0.024	0.144	0.266			0.468		0	1
100-200-13-005	1.000	0.940	1.020	1	0.563	1.220	1.060	0.670	0.032	0.144	.250 / .313					0	1
100-200-13-006	1.000	0.940	1.020	2	0.688	1.220	1.060	0.670	0.032	0.144	0.188			0.312		0	1
100-200-13-007	1.000	0.940	1.020	2	1.000	1.210	1.050	0.660	0.024	0.128	0.266	0.180	0.180	0.468		4	2
100-200-13-008	1.000	0.940	1.020	3	1.469	1.210	1.050	0.660	0.024	0.128	0.266			0.937	0.468	0	1
100-200-13-009	1.000	0.940	1.020	3	1.875	1.220	1.060	0.670	0.032	0.144	0.250	0.600	0.600	1.375	0.688	2	2
100-200-13-010	1.000	0.940	1.020	3	1.469	1.210	1.050	0.660	0.024	0.144	0.266	0.470	0.470	0.937	0.468	2	2
100-200-13-011	1.000	0.940	1.020	3	1.875	1.200	1.030	0.650	0.016	0.144	0.250			1.375	0.688	0	1
100-200-13-012	1.000	0.940	1.020	2	0.688	1.200	1.030	0.650	0.016	0.144	0.188			0.312		0	1
100-200-13-013	1.000	0.940	1.020	2	0.750	1.220	1.060	0.670	0.032	0.128	0.188			0.375		0	1
100-200-13-014	1.000	0.940	1.020	3	1.875	1.210	1.050	0.660	0.024	0.128	0.250	0.160	0.160	1.375	0.688	9	2
100-200-13-015	1.000	0.940	1.020	2	1.000	1.210	1.040	0.660	0.020	0.103	0.281	0.250	0.130	0.438		4	2
100-200-13-016	1.000	0.940	1.020	3	1.875	1.210	1.050	0.660	0.024	0.144	0.250	0.600	0.600	1.375	0.688	2	2
100-200-13-017	1.000	0.940	1.020	3	1.875	1.210	1.040	0.660	0.020	0.103	0.250	0.160	0.160	1.375	0.688	9	2
100-200-13-018	1.000	0.940	1.020	2	0.750	1.220	1.060	0.670	0.032	0.128	0.188	0.160	0.160	0.375		3	2
100-200-13-019	1.000	0.940	1.020	2	0.625	1.210	1.050	0.660	0.024	0.128	0.156			0.312		0	1
100-200-13-020	1.000	0.940	1.020	2	1.000	1.210	1.050	0.660	0.024	0.128	0.266	0.180	0.180	0.468		4	2
100-200-13-021	1.000	0.940	1.020	2	1.000	1.220	1.060	0.670	0.032	0.144	0.266			0.468		0	1
100-200-13-022	1.000	0.940	1.020	3	1.875	1.220	1.060	0.670	0.032	0.144	0.250	0.340	0.340	1.375	0.688	4	2
100-200-13-023	1.000	0.940	1.020	2	0.688	1.210	1.040	0.660	0.020	0.144	0.250	0.330		0.312		1	2
100-200-13-024	1.000	0.940	1.020	3	1.000	1.210	1.050	0.660	0.024	0.144	0.188			0.625	0.312	0	1

Note: All dimensions are with clip secured to flat surface as normally mounted with component of nominal diameter in place.



Spring Clips

Material: Spring Steel - ASTM-A684

Standard Plating: Cadmium-Yellow Chromate AMS QQ-P-416 CLASS 2 TYPE II

Other Finishes Available: www.atlee.com/wp-content/uploads/docs/finishes.pdf

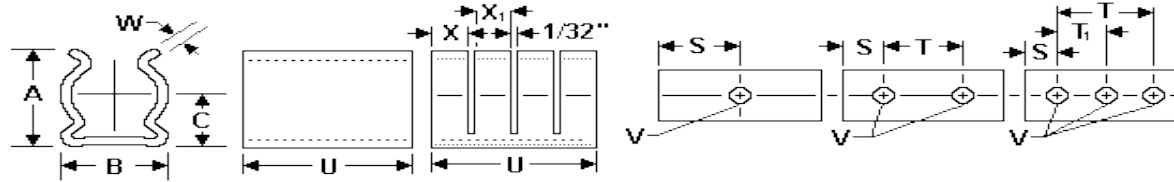


Figure 1. Figure 2.

Part #	Nom Dia	Min Dia	Max Dia	Holes	U +/- .010	A +/- .020	B +/- .010	C +/- .020	W +/- .003	V +/- .003	S +/- .010	X +/- .020	X +/- .020	T +/- .005	T1 +/- .005	Slots	Figure
100-200-13-025	1.000	0.940	1.020	3	1.750	1.200	1.030	0.650	0.016	0.098	0.250	0.410	0.410	1.250	0.625	3	2
100-200-13-026	1.000	0.940	1.020	3	1.875	1.200	1.030	0.650	0.016	0.144	0.236	0.240	0.240	1.400	0.700	6	2
100-200-13-027	1.000	0.940	1.020	3	1.875	1.220	1.060	0.670	0.028	0.142	0.312	0.600	0.600	1.250	0.625	2	2
100-200-13-028	1.000	0.940	1.020	2	1.000	1.210	1.050	0.660	0.024	0.128	0.266	0.310	0.310	0.468		2	2
100-200-13-029	1.000	0.940	1.020	2	1.188	1.210	1.040	0.660	0.020	0.103	0.250	0.270	0.270	0.688		3	2
100-200-13-030	1.000	0.940	1.020	3	2.000	1.210	1.040	0.660	0.020	0.103	0.313	0.190	0.190	1.375	0.688	8	2
100-200-13-031	1.000	0.940	1.020	3	1.750	1.210	1.040	0.660	0.020	0.144	0.188			1.375	0.687	0	1
100-200-13-032	1.000	0.940	1.020	3	1.875	1.210	1.050	0.660	0.024	0.144	0.250			1.375	0.687	0	1
100-200-13-033	1.000	0.940	1.020	3	1.875	1.210	1.040	0.660	0.020	0.128	0.250			1.375	0.687	0	1
100-200-13-034	1.000	0.940	1.020	2	1.000	1.200	1.030	0.650	0.016	0.128	0.266			0.468		0	1
100-200-13-035	1.000	0.940	1.020	2	1.188	1.220	1.060	0.670	0.032	0.128	0.219			0.750		0	1
100-200-13-036	1.000	0.940	1.020	3	1.000	1.200	1.030	0.650	0.016	0.128	0.281	0.180	0.180	0.438	0.219	4	2
100-200-13-037	1.000	0.940	1.020	3	1.875	1.210	1.040	0.660	0.020	0.144	0.250	0.600	0.600	1.375	0.687	2	2
100-200-13-038	1.000	0.940	1.020	2	1.250	1.210	1.050	0.660	0.024	0.140	0.325			0.600		0	1
100-200-13-039	1.000	0.940	1.020	2	1.000	1.210	1.050	0.660	0.024	0.144	0.200			0.600		0	1
100-200-13-040	1.000	0.940	1.020	2	1.188	1.210	1.040	0.660	0.020	0.144	0.250	0.270	0.270	0.688		3	2
100-200-13-043	1.000	0.940	1.020	3	2.375	1.210	1.040	0.660	0.020	0.144	0.438	0.570	0.570	0.750	1.500	3	2
100-200-13-044	1.000	0.940	1.020	3	2.000	1.200	1.030	0.650	0.016	0.144	0.500	0.260	0.260	1.000	0.500	6	2
100-200-13-045	1.000	0.940	1.020	3	2.000	1.200	1.030	0.650	0.016	0.144	0.300	0.222	0.222	1.400	0.700	7	2
100-200-13-046	1.000	0.940	1.020	2	1.875	1.210	1.040	0.660	0.020	0.136	0.237	0.920		1.400		1	2
100-200-13-090	1.000	0.940	1.020	1	0.688	1.220	1.060	0.670	0.032	0.136	0.344					0	1
100-200-13-091	1.000	0.940	1.020	2	1.000	1.220	1.060	0.670	0.028	0.136	0.266			0.468		0	1
100-200-13-092	1.000	0.940	1.020	1	0.438	1.210	1.040	0.660	0.020	0.128	0.219					0	1
100-200-13-093	1.000	0.940	1.020	2	0.688	1.210	1.040	0.660	0.020	0.136	0.193	0.320		0.300		1	2
100-200-13-094	1.000	0.940	1.020	2	1.400	1.220	1.060	0.670	0.032	0.140	0.300			0.800		0	1
100-200-13-096	1.000	0.940	1.020	1	0.563	1.220	1.060	0.670	0.032	0.093	0.281					0	1

Note: All dimensions are with clip secured to flat surface as normally mounted with component of nominal diameter in place.

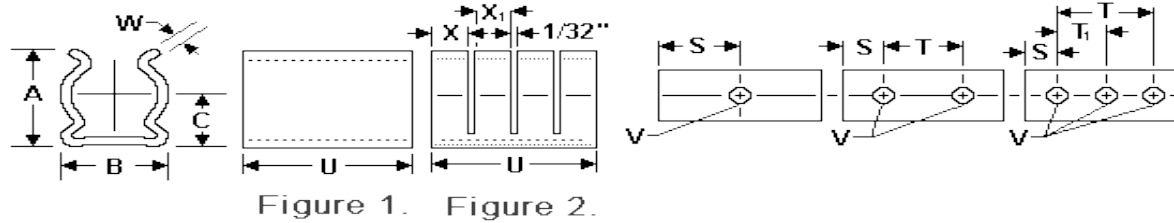


Spring Clips

Material: Spring Steel - ASTM-A684

Standard Plating: Cadmium-Yellow Chromate AMS QQ-P-416 CLASS 2 TYPE II

Other Finishes Available: www.atlee.com/wp-content/uploads/docs/finishes.pdf



Part #	Nom Dia	Min Dia	Max Dia	Holes	U +/- .010	A +/- .020	B +/- .010	C +/- .020	W +/- .003	V +/- .003	S +/- .010	X +/- .020	X +/- .020	T +/- .005	T1 +/- .005	Slots	Figure
100-200-13-097	1.000	0.940	1.020	1	0.375	1.200	1.030	0.650	0.016	0.128	0.188					0	1
100-200-13-098	1.000	0.940	1.020	2	1.000	1.220	1.060	0.670	0.032	0.103	0.200			0.600	0.687	0	1
100-200-13-099	1.000	0.940	1.020	3	1.875	1.210	1.040	0.660	0.020	0.144	0.250	0.920		1.375	0.687	1	2
100-200-13-100	1.000	0.940	1.020	1	0.375	1.220	1.060	0.670	0.028	0.122	0.188					0	1
100-200-13-101	1.000	0.940	1.020	1	0.438	1.210	1.040	0.660	0.020	0.196	0.219					0	1
100-200-13-102	1.000	0.940	1.020	1	1.250	1.210	1.050	0.660	0.024	0.128	0.250	0.175	0.175	0.750		5	2
100-200-13-103	1.000	0.940	1.020	1	0.400	1.220	1.060	0.670	0.032	0.171	0.200					0	1
100-200-13-104	1.000	0.940	1.020	2	1.188	1.220	1.060	0.670	0.032	0.144	0.250			0.688		0	1
100-200-13-106	1.000	0.940	1.020	2	1.000	1.220	1.060	0.670	0.032	0.144	0.250			0.500		0	1

Note: All dimensions are with clip secured to flat surface as normally mounted with component of nominal diameter in place.