



## Spring Clips

Material: Spring Steel - ASTM-A684

Standard Plating: Cadmium-Yellow Chromate AMS QQ-P-416 CLASS 2 TYPE II

Other Finishes Available: [www.atlee.com/wp-content/uploads/docs/finishes.pdf](http://www.atlee.com/wp-content/uploads/docs/finishes.pdf)

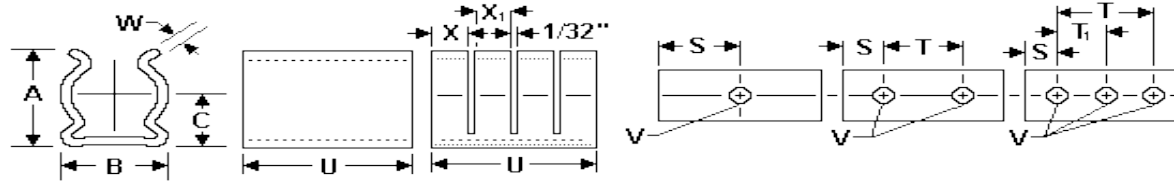


Figure 1. Figure 2.

### .375 Diameter Spring Clips – Spring Steel

Part #	Nom Dia	Min Dia	Max Dia	Holes	U +/- .010	A +/- .020	B +/- .010	C +/- .020	W +/- .003	V +/- .003	S +/- .010	X +/- .020	X +/- .020	T +/- .005	T1 +/- .005	Slots	Figure
100-200-14-000	0.375	0.34	0.395	3	1.188	0.46	0.4	0.26	0.012	0.093	0.188	0.38	0.38	0.813	0.406	2	2
100-200-14-001	0.375	0.34	0.395	2	0.781	0.46	0.4	0.26	0.012	0.093	0.188	0.38		0.406		1	2
100-200-14-002	0.375	0.34	0.395	3	1.125	0.46	0.4	0.26	0.012	0.093	0.156	0.34	0.38	0.813	0.406	2	2
100-200-14-003	0.375	0.34	0.395	3	1	0.46	0.4	0.26	0.012	0.093	0.094	0.28	0.38	0.813	0.406	2	2
100-200-14-004	0.375	0.34	0.395	2	0.719	0.46	0.4	0.26	0.012	0.067	0.156	0.34		0.406		1	2
100-200-14-005	0.375	0.34	0.395	3	1.188	0.46	0.4	0.26	0.012	0.067	0.188	0.38	0.38	0.813	0.406	2	2
100-200-14-006	0.375	0.34	0.395	2	0.75	0.46	0.4	0.26	0.012	0.093	0.172	0.36		0.406		1	2
100-200-14-007	0.375	0.34	0.395	1	0.375	0.46	0.4	0.26	0.012	0.098	0.188					0	1
100-200-14-008	0.375	0.34	0.395	3	1.125	0.46	0.4	0.26	0.012	0.093	0.188	0.34	0.38	0.75	0.375	2	2
100-200-14-009	0.375	0.34	0.395	2	0.953	0.46	0.4	0.26	0.012	0.078	0.188			0.578		0	1
100-200-14-010	0.375	0.34	0.395	1	0.375	0.46	0.4	0.26	0.012	0.136	0.188					0	1
100-200-14-016	0.375	0.34	0.395	2	0.75	0.46	0.4	0.26	0.012	0.115	0.188	0.12	0.13	0.375		4	2
100-200-14-017	0.375	0.34	0.395	2	1.125	0.46	0.4	0.26	0.012	0.115	0.313	0.15	0.13	0.5		6	2
100-200-14-019	0.375	0.34	0.395	2	0.953	0.46	0.4	0.26	0.012	0.078	0.187	0.3	0.3	0.578		2	2
100-200-14-020	0.375	0.34	0.395	3	1.188	0.46	0.4	0.26	0.012	0.103	0.188	0.38	0.38	0.813	0.406	2	2
100-200-14-021	0.375	0.34	0.395	2	0.781	0.46	0.4	0.26	0.012	0.103	0.188	0.38		0.406		1	2
100-200-14-022	0.375	0.34	0.395	2	0.625	0.46	0.4	0.26	0.012	0.093	0.125			0.375		0	1
100-200-14-023	0.375	0.34	0.395	1	0.25	0.46	0.4	0.26	0.012	0.093	0.125					0	1
100-200-14-024	0.375	0.34	0.395	2	0.75	0.46	0.4	0.26	0.012	0.128	0.188			0.375		0	1
100-200-14-025	0.375	0.34	0.395	1	0.375	0.46	0.4	0.26	0.012	0.076	0.188					0	1
100-200-14-026	0.375	0.34	0.395	2	0.781	0.46	0.4	0.26	0.012	0.098	0.188	0.38		0.406		1	2
100-200-14-027	0.375	0.34	0.395	2	0.953	0.46	0.4	0.26	0.012	0.093	0.188			0.578		0	1
100-200-14-028	0.375	0.34	0.395	2	0.781	0.46	0.4	0.26	0.012	0.103	0.172	0.38		0.438		1	2
100-200-14-029	0.375	0.34	0.395	2	0.781	0.46	0.4	0.26	0.012	0.128	0.188	0.14	0.13	0.406		4	2
100-200-14-030	0.375	0.34	0.395	1	0.5	0.46	0.4	0.26	0.012	0.128	0.25	0.08	0.13			3	2

**Note:** All dimensions are with clip secured to flat surface as normally mounted with component of nominal diameter in place.



## Spring Clips

Material: Spring Steel - ASTM-A684

Standard Plating: Cadmium-Yellow Chromate AMS QQ-P-416 CLASS 2 TYPE II

Other Finishes Available: [www.atlee.com/wp-content/uploads/docs/finishes.pdf](http://www.atlee.com/wp-content/uploads/docs/finishes.pdf)

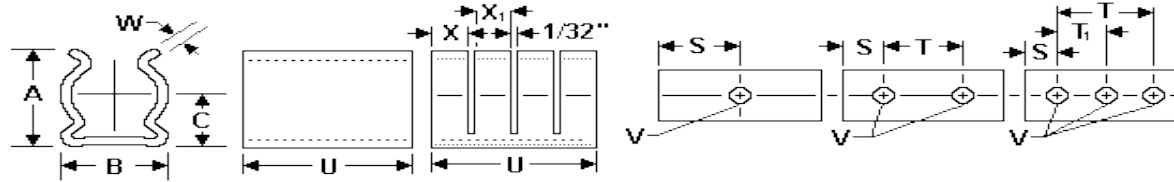


Figure 1. Figure 2.

Part #	Nom Dia	Min Dia	Max Dia	Holes	U +/- .010	A +/- .020	B +/- .010	C +/- .020	W +/- .003	V +/- .003	S +/- .010	X +/- .020	X +/- .020	T +/- .005	T1 +/- .005	Slots	Figure
100-200-14-031	0.375	0.34	0.395	2	0.75	0.46	0.4	0.26	0.012	0.103	0.188			0.375		0	1
100-200-14-032	0.375	0.34	0.395	2	0.781	0.46	0.4	0.26	0.012	0.103	0.188			0.406		0	1
100-200-14-033	0.375	0.34	0.395	2	0.781	0.46	0.4	0.26	0.01	0.093	0.188	0.24	0.24	0.406		2	2
100-200-14-034	0.375	0.34	0.395	2	0.781	0.46	0.39	0.26	0.008	0.093	0.188	0.24	0.24	0.406		2	2
100-200-14-035	0.375	0.34	0.395	1	0.375	0.46	0.39	0.26	0.008	0.128	0.188	0.17				1	2
100-200-14-036	0.375	0.34	0.395	1	0.375	0.46	0.4	0.26	0.012	0.067	0.188					0	1
100-200-14-037	0.375	0.34	0.395	3	1.125	0.46	0.4	0.26	0.012	0.103	0.188	0.55		0.75	0.375	1	2
100-200-14-038	0.375	0.34	0.395	2	0.953	0.46	0.4	0.26	0.012	0.076	0.188	0.46	0.578			1	2
100-200-14-039	0.375	0.34	0.395	2	0.781	0.46	0.4	0.26	0.012	0.103	0.188	0.24	0.24	0.406		2	2
100-200-14-040	0.375	0.34	0.395	1	0.375	0.46	0.4	0.26	0.012	0.093	0.188					0	1
100-200-14-041	0.375	0.34	0.395	3	0.813	0.46	0.4	0.26	0.012	0.093	0.188			0.813	0.406	0	1
100-200-14-042	0.375	0.34	0.395	2	1	0.46	0.4	0.26	0.012	0.141	0.25	0.312	0.312	0.5		2	2
100-200-14-043	0.375	0.34	0.395	1	0.375	0.46	0.4	0.26	0.012	0.131	0.188					0	1
100-200-14-044	0.375	0.34	0.395	2	0.75	0.46	0.4	0.26	0.012	0.093	0.188	0.12	0.13	0.375		4	2
100-200-14-045	0.375	0.34	0.395	2	0.5	0.46	0.4	0.26	0.012	0.093	0.125	0.1	0.1	0.25		3	2
100-200-14-046	0.375	0.34	0.395	3	1.188	0.46	0.4	0.26	0.012	0.103	0.188			0.813	0.406	0	1
100-200-14-084	0.375	0.34	0.395	2	0.375	0.46	0.4	0.26	0.012	0.093	0.063	0.1	0.1	0.25		2	2
100-200-14-085	0.375	0.34	0.395	2	0.75	0.46	0.4	0.26	0.012	0.065	0.188	0.12	0.13	0.375		2	2
100-200-14-086	0.375	0.34	0.395	2	0.75	0.46	0.4	0.26	0.012	0.103	0.156	0.36		0.437		1	2
100-200-14-087	0.375	0.34	0.395	1	0.25	0.46	0.4	0.26	0.012	0.098	0.125					0	1
100-200-14-088	0.375	0.34	0.395	2	0.953	0.46	0.4	0.26	0.012	0.076	0.188			0.578		0	1
100-200-14-089	0.375	0.34	0.395	1	0.5	0.46	0.4	0.26	0.012	0.103	0.25					0	1
100-200-14-090	0.375	0.34	0.395	3	1	0.46	0.4	0.26	0.012	0.128	0.094	0.28	0.38	0.813	0.406	2	2
100-200-14-091	0.375	0.34	0.395	1	0.375	0.46	0.4	0.26	0.012	0.125	0.188					0	1
100-200-14-092	0.375	0.34	0.395	2	0.953	0.46	0.4	0.26	0.012	0.093	0.258	0.46		0.437		1	2
100-200-14-093	0.375	0.34	0.395	2	0.953	0.46	0.4	0.26	0.012	0.103	0.187			0.578		0	1

**Note:** All dimensions are with clip secured to flat surface as normally mounted with component of nominal diameter in place.



## Spring Clips

Material: Spring Steel - ASTM-A684

Standard Plating: Cadmium-Yellow Chromate AMS QQ-P-416 CLASS 2 TYPE II

Other Finishes Available: [www.atlee.com/wp-content/uploads/docs/finishes.pdf](http://www.atlee.com/wp-content/uploads/docs/finishes.pdf)

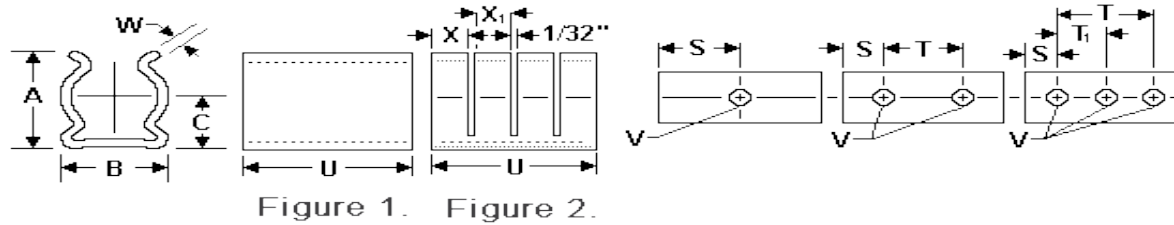


Figure 1. Figure 2.

Part #	Nom Dia	Min Dia	Max Dia	Holes	U +/- .010	A +/- .020	B +/- .010	C +/- .020	W +/- .003	V +/- .003	S +/- .010	X +/- .020	X +/- .020	T +/- .005	T1 +/- .005	Slots	Figure
100-200-14-094	0.375	0.34	0.395	2	1.125	0.46	0.4	0.26	0.012	0.128	0.313	0.15	0.13	0.5		2	2
100-200-14-095	0.375	0.34	0.395	2	0.953	0.46	0.4	0.26	0.012	0.109	0.188			0.578		0	1
100-200-14-096	0.375	0.34	0.395	2	0.375	0.46	0.4	0.26	0.012	0.067	0.109			0.156		0	1
100-200-14-097	0.375	0.34	0.395	2	0.75	0.46	0.4	0.26	0.012	0.093	0.172	0.36		0.406		1	2
100-200-14-098	0.375	0.34	0.395	2	0.719	0.46	0.4	0.26	0.012	0.067	0.156	0.38		0.406		1	2
100-200-14-099	0.375	0.34	0.395	2	0.781	0.46	0.4	0.26	0.012	0.093	0.188	0.38		0.406		1	2

**Note:** All dimensions are with clip secured to flat surface as normally mounted with component of nominal diameter in place.