



Spring Clips

Material: # 172 Beryllium Copper ASTM B194

Standard Plating: Cadmium-Yellow Chromate AMS QQ-P-416 CLASS 2 TYPE II

Other Finishes Available: www.atlee.com/wp-content/uploads/docs/finishes.pdf

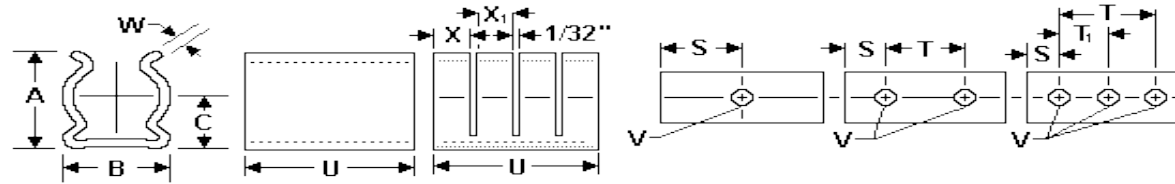


Figure 1. Figure 2.

.195 Diameter Spring Clips - Beryllium Copper

Part #	Nom Dia	Min Dia	Max Dia	Holes	U +/- .010	A +/- .020	B +/- .010	C +/- .020	W +/- .003	V +/- .003	S +/- .010	X +/- .020	X +/- .020	T +/- .005	T1 +/- .005	Slots	Figure
100-300-03-000	0.195	0.17	0.215	3	1.125	0.27	0.21	0.15	0.01	0.071	0.125			0.875	0.438	0	1
100-300-03-001	0.195	0.17	0.215	3	1.188	0.27	0.21	0.15	0.01	0.071	0.156	0.38	0.38	0.875	0.438	2	2
100-300-03-002	0.195	0.17	0.215	2	0.781	0.27	0.21	0.15	0.01	0.071	0.172	0.34		0.438		1	2
100-300-03-003	0.195	0.17	0.215	3	1.125	0.27	0.21	0.15	0.01	0.093	0.156			0.813	0.406	0	1
100-300-03-004	0.195	0.17	0.215	0	0.75	0.27	0.21	0.15	0.012							0	1
100-300-03-005	0.195	0.17	0.215	2	1	0.27	0.21	0.15	0.01	0.078	0.203			0.594		0	1
100-300-03-006	0.195	0.17	0.215	2	0.781	0.27	0.21	0.15	0.01	0.071	0.219	0.438		0.343		1	2
100-300-03-007	0.195	0.17	0.215	2	0.781	0.27	0.21	0.15	0.01	0.071	0.172	0.438		0.34		1	2
100-300-03-008	0.195	0.17	0.215	1	0.313	0.27	0.21	0.15	0.012	0.071	0.156					0	1
100-300-03-009	0.195	0.17	0.215	2	0.547	0.27	0.21	0.15	0.01	0.071	0.117			0.312		0	1
100-300-03-010	0.195	0.17	0.215	2	0.875	0.27	0.21	0.15	0.012	0.098	0.218	0.418		0.438		1	2
100-300-03-011	0.195	0.17	0.215	2	1	0.27	0.21	0.15	0.01	0.078	0.211			0.578		0	1
100-300-03-099	0.195	0.17	0.215	2	0.625	0.27	0.21	0.15	0.01	0.065				0.375		0	1

Note: All dimensions are with clip secured to flat surface as normally mounted with component of nominal diameter in place.

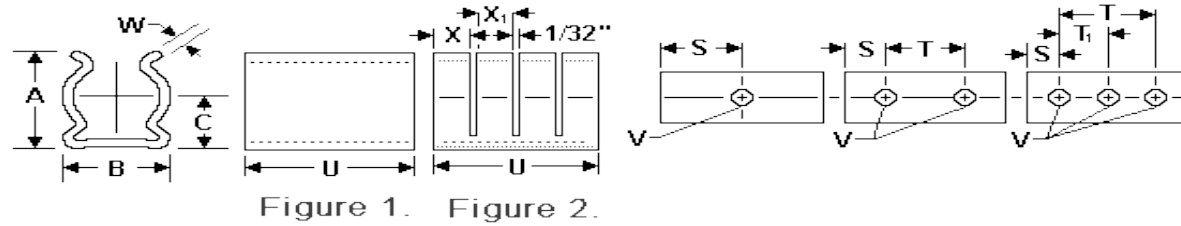


Spring Clips

Material: # 172 Beryllium Copper ASTM B194

Standard Plating: Cadmium-Yellow Chromate AMS QQ-P-416 CLASS 2 TYPE II

Other Finishes Available: www.atlee.com/wp-content/uploads/docs/finishes.pdf



Note: All dimensions are with clip secured to flat surface as normally mounted with component of nominal diameter in place.

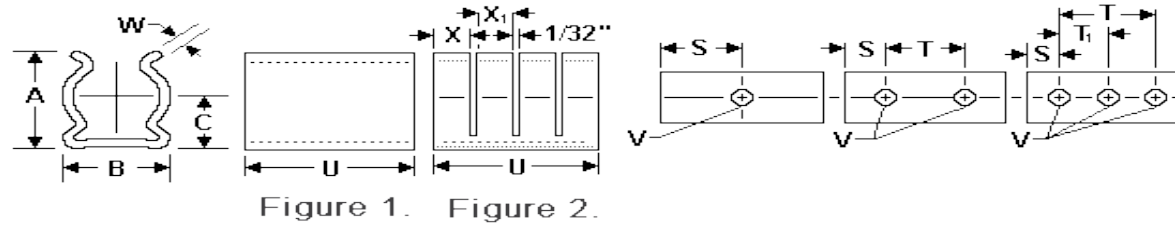


Spring Clips

Material: # 172 Beryllium Copper ASTM B194

Standard Plating: Cadmium-Yellow Chromate AMS QQ-P-416 CLASS 2 TYPE II

Other Finishes Available: www.atlee.com/wp-content/uploads/docs/finishes.pdf



Note: All dimensions are with clip secured to flat surface as normally mounted with component of nominal diameter in place.