



Spring Clips

Material: # 172 Beryllium Copper ASTM B194

Standard Plating: Cadmium-Yellow Chromate AMS QQ-P-416 CLASS 2 TYPE II

Other Finishes Available: www.atlee.com/wp-content/uploads/docs/finishes.pdf

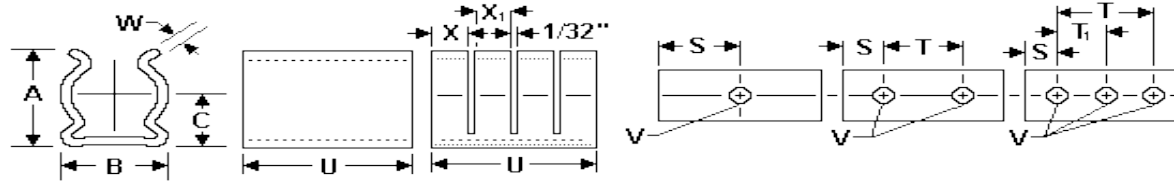


Figure 1. Figure 2.

.562 Diameter Spring Clips - Beryllium Copper

Part #	Nom Dia	Min Dia	Max Dia	Holes	U +/- .010	A +/- .020	B +/- .010	C +/- .020	W +/- .003	V +/- .003	S +/- .010	X +/- .020	X +/- .020	T +/- .005	T1 +/- .005	Slots	Figure
100-300-09-000	0.562	0.522	0.592	3	1	0.69	0.6	0.4	0.022	0.128	0.188			0.625	0.312	0	1
100-300-09-001	0.562	0.522	0.592	2	1	0.69	0.6	0.4	0.022	0.093	0.188			0.625		0	1
100-300-09-002	0.562	0.522	0.592	2	0.688	0.69	0.6	0.4	0.022	0.128	0.188			0.312		0	1
100-300-09-003	0.562	0.522	0.592	1	0.375	0.69	0.6	0.4	0.022	0.093	0.188					0	1
100-300-09-004	0.562	0.522	0.592	2	0.625	0.69	0.6	0.4	0.022	0.128	0.156	0.3		0.312		1	2
100-300-09-005	0.562	0.522	0.592	3	1	0.69	0.6	0.4	0.022	0.128	0.188	0.31	0.31	0.625	0.312	2	2
100-300-09-006	0.562	0.522	0.592	3	1	0.68	0.59	0.39	0.016	0.128	0.188			0.625	0.312	0	1
100-300-09-007	0.562	0.522	0.592	3	1	0.69	0.6	0.4	0.016	0.071	0.188			0.625	0.312	0	1
100-300-09-008	0.562	0.522	0.592	3	1	0.68	0.59	0.39	0.016	0.093	0.188			0.625	0.312	0	1
100-300-09-009	0.562	0.522	0.592	2	1	0.69	0.6	0.4	0.016	0.114	0.25			0.5		0	1
100-300-09-010	0.562	0.522	0.592	2	0.625	0.68	0.59	0.39	0.016	0.128	0.156			0.312		0	1
100-300-09-011	0.562	0.522	0.592	3	1	0.68	0.59	0.39	0.016	0.128	0.2	0.31	0.31	0.6	0.3	2	2
100-300-09-012	0.562	0.522	0.592	2	0.875	0.68	0.59	0.39	0.016	0.067	0.25			0.375		0	1
100-300-09-013	0.562	0.522	0.592	2	0.875	0.68	0.59	0.39	0.016	0.104	0.25			0.375		0	1
100-300-09-014	0.562	0.522	0.592	2	0.625	0.69	0.6	0.4	0.016	0.128	0.156	0.3		0.312		1	2
100-300-09-015	0.562	0.522	0.592	2	1.063	0.69	0.6	0.4	0.014	0.128	0.25			0.562		0	1
100-300-09-016	0.562	0.522	0.592	2	0.625	0.69	0.6	0.4	0.014	0.098	0.156	0.3		0.312		1	2
100-300-09-017	0.562	0.522	0.592	2	0.563	0.69	0.6	0.4	0.014	0.128	0.125			0.312		0	1
100-300-09-018	0.562	0.522	0.592	2	1	0.69	0.6	0.4	0.025	0.128	0.187			0.625	0.312	0	1
100-300-09-019	0.562	0.522	0.592	2	1	0.69	0.6	0.4	0.012	0.128	0.25	0.31	0.31	0.5		2	2
100-300-09-020	0.562	0.522	0.592	3	1.625	0.69	0.6	0.4	0.014	0.128	0.25	0.51	0.51	1.125	0.625	2	2
100-300-09-021	0.562	0.522	0.592	3	1.625	0.69	0.6	0.4	0.014	0.136	0.25	0.51	0.51	1.125	0.625	2	2
100-300-09-022	0.562	0.522	0.592	2	1	0.69	0.6	0.4	0.014	0.136	0.25	0.48		0.5		1	2

Note: All dimensions are with clip secured to flat surface as normally mounted with component of nominal diameter in place.



Spring Clips

Material: # 172 Beryllium Copper ASTM B194

Standard Plating: Cadmium-Yellow Chromate AMS QQ-P-416 CLASS 2 TYPE II

Other Finishes Available: www.atlee.com/wp-content/uploads/docs/finishes.pdf

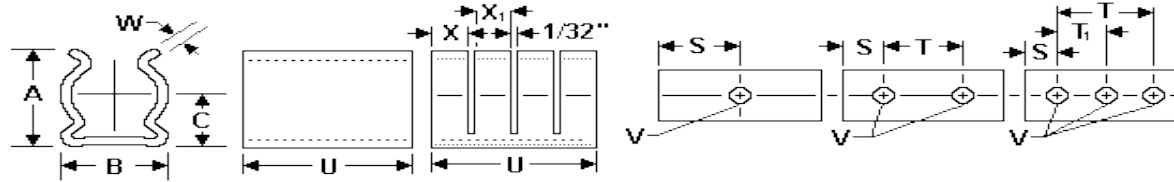


Figure 1. Figure 2.

Part #	Nom Dia	Min Dia	Max Dia	Holes	U +/- .010	A +/- .020	B +/- .010	C +/- .020	W +/- .003	V +/- .003	S +/- .010	X +/- .020	X +/- .020	T +/- .005	T1 +/- .005	Slots	Figure
100-300-09-023	0.562	0.522	0.592	2	1	0.69	0.6	0.4	0.022	0.103	0.188			0.625		0	1
100-300-09-024	0.562	0.522	0.592	1	0.375	0.69	0.6	0.4	0.022	0.103	0.188					0	1
100-300-09-025	0.562	0.522	0.592	3	1	0.69	0.6	0.4	0.016	0.128	0.187	0.31	0.31	0.625	0.312	2	2
100-300-09-086	0.562	0.522	0.592	3	1	0.69	0.6	0.4	0.014	0.128	0.187	0.31	0.31	0.625	0.312	2	2
100-300-09-087	0.562	0.522	0.592	2	1.6	0.69	0.6	0.4	0.022	0.14	0.4			0.8		0	1
100-300-09-088	0.562	0.522	0.592	2	0.625	0.69	0.6	0.4	0.012	0.128				0.312		1	2
100-300-09-089	0.562	0.522	0.592	2	1	0.69	0.6	0.4	0.014	0.128	0.188			0.625		0	1
100-300-09-090	0.562	0.522	0.592	2	1	0.69	0.6	0.4	0.014	0.128	0.25			0.5		1	2
100-300-09-091	0.562	0.522	0.592	3	0.953	0.69	0.6	0.4	0.014	0.128	0.16			0.625	0.312	0	1
100-300-09-092	0.562	0.522	0.592	3	1	0.69	0.6	0.4	0.025	0.07	0.188			0.625	0.312	0	1
100-300-09-093	0.562	0.522	0.592	3	1	0.69	0.6	0.4	0.025	0.144				0.75	0.375	0	1
100-300-09-094	0.562	0.522	0.592	3	1	0.69	0.6	0.4	0.012	0.128				0.625	0.312	4	2
100-300-09-095	0.562	0.522	0.592	1	0.5	0.69	0.6	0.4	0.014	0.128	0.25					0	1
100-300-09-096	0.562	0.522	0.592	3	1	0.69	0.6	0.4	0.014	0.07				0.625	0.312	0	1
100-300-09-097	0.562	0.522	0.592	2	1	0.69	0.6	0.4	0.012	0.128	0.25			0.5		6	2
100-300-09-098	0.562	0.522	0.592	3	1.625	0.69	0.6	0.4	0.022	0.128	0.25	0.56	0.44	1.125	0.562	2	2
100-300-09-099	0.562	0.522	0.592	2	1	0.69	0.6	0.4	0.022	0.093	0.187	0.31	0.31	0.625		2	2

Note: All dimensions are with clip secured to flat surface as normally mounted with component of nominal diameter in place.

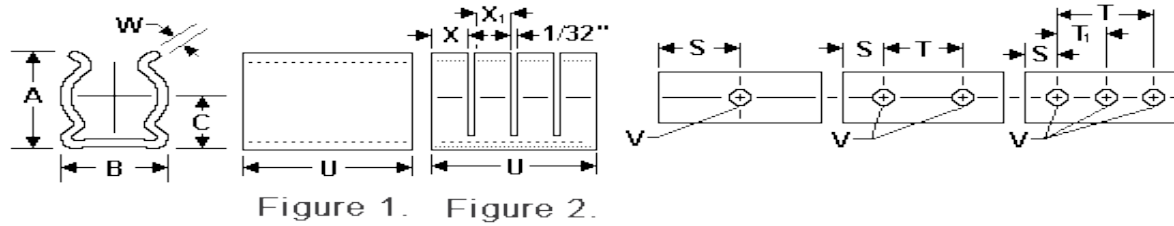


Spring Clips

Material: # 172 Beryllium Copper ASTM B194

Standard Plating: Cadmium-Yellow Chromate AMS QQ-P-416 CLASS 2 TYPE II

Other Finishes Available: www.atlee.com/wp-content/uploads/docs/finishes.pdf



Note: All dimensions are with clip secured to flat surface as normally mounted with component of nominal diameter in place.

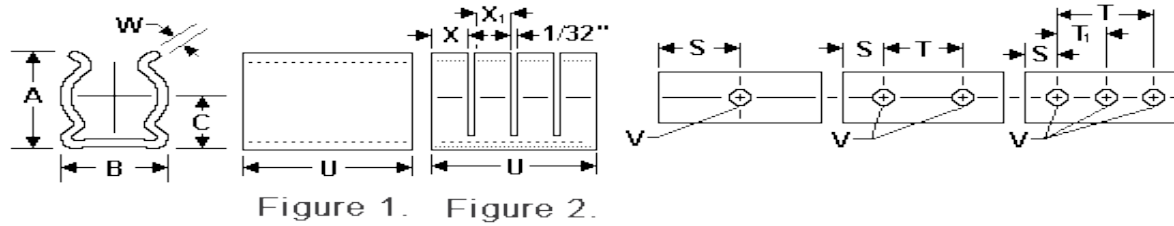


Spring Clips

Material: # 172 Beryllium Copper ASTM B194

Standard Plating: Cadmium-Yellow Chromate AMS QQ-P-416 CLASS 2 TYPE II

Other Finishes Available: www.atlee.com/wp-content/uploads/docs/finishes.pdf



Note: All dimensions are with clip secured to flat surface as normally mounted with component of nominal diameter in place.