

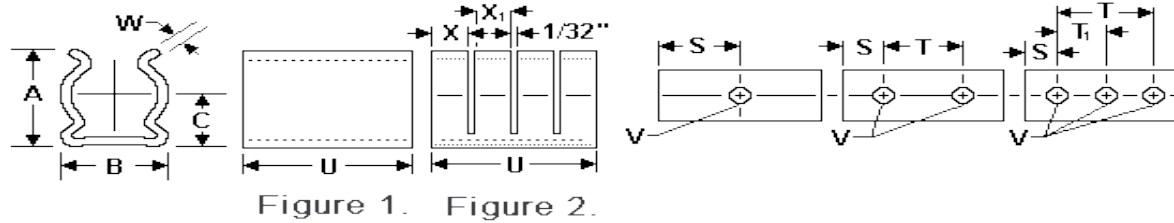


## Spring Clips

Material: # 172 Beryllium Copper ASTM B194

Standard Plating: Cadmium-Yellow Chromate AMS QQ-P-416 CLASS 2 TYPE II

Other Finishes Available: [www.atlee.com/wp-content/uploads/docs/finishes.pdf](http://www.atlee.com/wp-content/uploads/docs/finishes.pdf)



### 1.500 Diameter Spring Clips - Beryllium Copper

Part #	Nom Dia	Min Dia	Max Dia	Holes	U +/- .010	A +/- .020	B +/- .010	C +/- .020	W +/- .003	V +/- .003	S +/- .010	X +/- .020	X +/- .020	T +/- .005	T1 +/- .005	Slots	Figure
100-300-17A-000	1.5	1.31	1.75	3	2	1.67	1.56	0.89	0.028	0.162	0.25			1.5	0.75	0	1
100-300-17A-001	1.5	1.31	1.75	2	1	1.67	1.56	0.89	0.03	0.156	0.188			0.625		0	1
100-300-17A-002	1.5	1.31	1.75	2	1.375	1.67	1.56	0.89	0.028	0.162	0.219			0.938		0	1
100-300-17A-003	1.5	1.31	1.75	2	1.014	1.67	1.56	0.89	0.03	0.156	0.188			0.625		0	1
100-300-17A-004	1.5	1.31	1.75	2	0.75	1.67	1.56	0.89	0.031	0.128	0.188			0.375		0	1
100-300-17A-005	1.5	1.31	1.75	3	2	1.67	1.56	0.89	0.028	0.098	0.25			1.5	0.75	0	1
100-300-17A-006	1.5	1.31	1.75	2	1	1.67	1.56	0.89	0.03	0.162	0.188			0.625		0	1

**Note:** All dimensions are with clip secured to flat surface as normally mounted with component of nominal diameter in place.

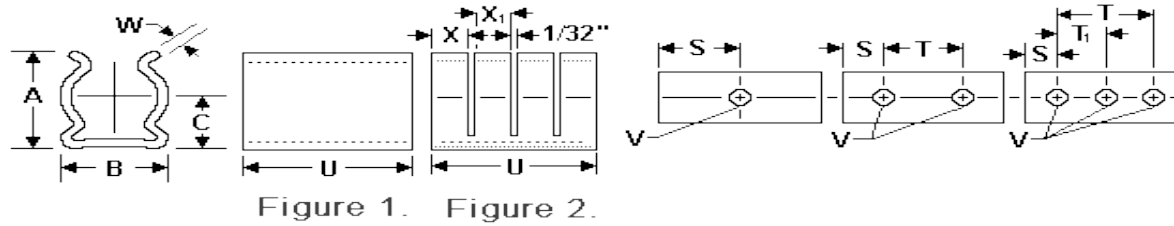


## Spring Clips

Material: # 172 Beryllium Copper ASTM B194

Standard Plating: Cadmium-Yellow Chromate AMS QQ-P-416 CLASS 2 TYPE II

Other Finishes Available: [www.atlee.com/wp-content/uploads/docs/finishes.pdf](http://www.atlee.com/wp-content/uploads/docs/finishes.pdf)



**Note:** All dimensions are with clip secured to flat surface as normally mounted with component of nominal diameter in place.